

Salisbury Museum's Wessex Gallery showcases over 2,500 rare objects which tell the story of early Britain from the mathematical genius of the ancient Britons and Beaker people through to the Roman invasion and the Norman Conquest.

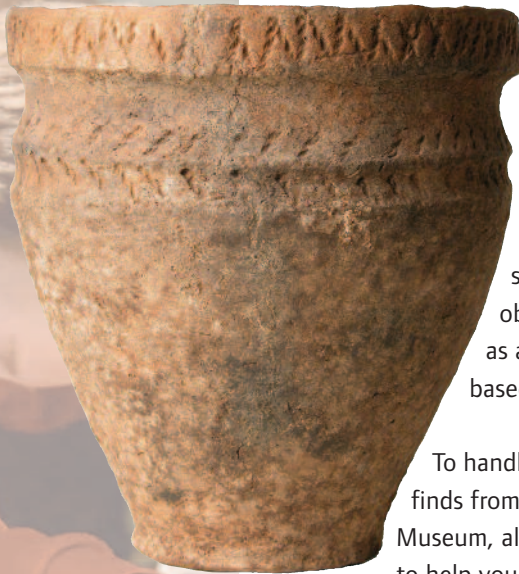
A standard class visit of up to 35 children will include led activities and exploration in the gallery.

The session is designed to be compact and with a pace to keep a class motivated and engaged. Additional student numbers and additional activities can be discussed with the Learning Officer before your visit and will mean extending your museum day beyond lunch time.

What will we achieve?

To gain a better understanding of the lives of people in Britain through the ages by looking at a basic tool – the pot

To get an understanding of how archaeologists have been able to discover more about people from the past by unearthing pottery artefacts.



To use a museum gallery as a historic and artistic resource

To build a collection of sketches and observations as well as a making a replica based on observations.

To handle multi period finds from The Salisbury Museum, along with replicas, to help your class discover life in the past for themselves.

To transfer this knowledge to making craft, working with clay to try the skills involved in pot making in the past. This will be slab, pinch or coil pot making.

Archaeology - What do you know?

Recap of existing knowledge to include;

What survives today and why?

Decay and materials

Why are pots used in rituals?

Pottery Archaeology and Art

Activities:

1 Pots through time

Exploring the Wessex Gallery, observing pottery from the different time periods and making annotated sketches.

2 Archaeology Record Sheets

Handling real and replica pots and completing an archaeology report sheet. Includes basic sketching and measuring.

3 Sketching out ideas

Designs for making replica pot based on those handled and seen in the gallery.

4 Make a thumb pot or pot shard with decoration

The period which the pot is replicating will be decided before the session.

5 Questions and Comments



Pottery Archaeology and Art

Pre and Post visit activities

Pre Visit

Your visit to the museum will focus on what kind of pottery archaeologists find, what that pottery tells us and what kind of designs were popular in the past.

Post Visit

Follow on activities and research to build on what your class have learnt about pottery in history.

Timeline

Looking back to the Stone Age, and where objects, characters and moments from time sit in that time line.

Book

A Street Through Time:

A 12,000-year Journey Along the Same Street by Dorling Kindersley

BBC British History TimeLine

http://www.bbc.co.uk/history/british/launch_tl_british.shtml

BBC History Stone Age

<http://www.bbc.co.uk/history/handsonhistory/ancient-britain.shtml>

BBC History Romans

<http://www.bbc.co.uk/schools/primaryhistory/romans/>

BBC History Saxons

http://www.bbc.co.uk/schools/primaryhistory/anglo_saxons/

Salisbury Museum Collections

<http://www.salisburymuseum.org.uk/collections/romans-saxons>

Wessex Archaeology Resource Page

<http://www.wessexarch.co.uk/learning/resources.html>

Young Archaeologists Club resource page

<http://www.yac-uk.org/funandgames>

'Rot or Not'

Make a selection of objects ranging in material and bury in various situations in the school. Try different soil types and moisture and maybe somewhere that is walked over and somewhere that is undisturbed. Record the objects before and after they are buried.

Create a Museum

Either using pots made by the class or pottery collected. Think about labelling, information required by the visitor and perhaps how to make a visit to their 'museum' more hands on and interactive for visitors.